



Modèle vivant

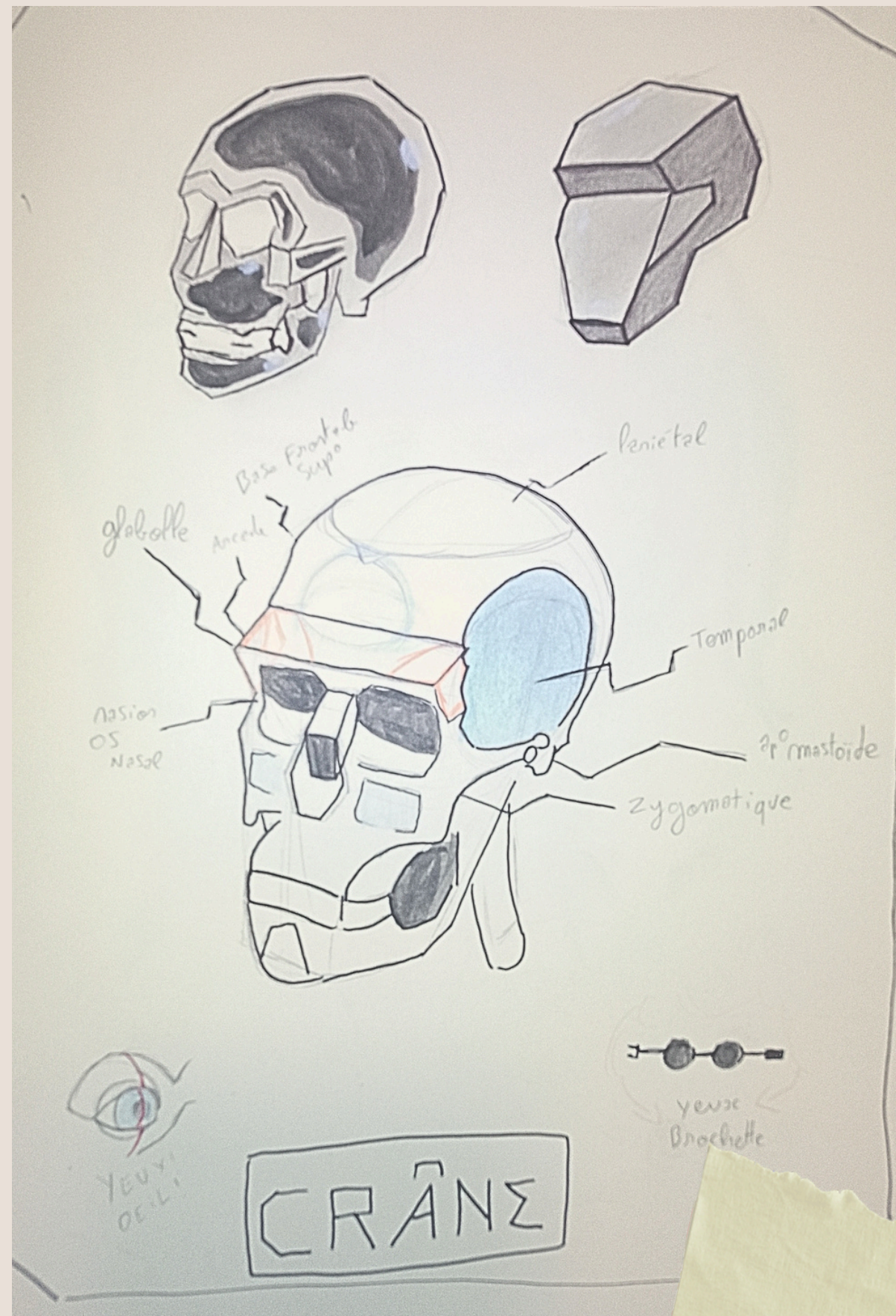
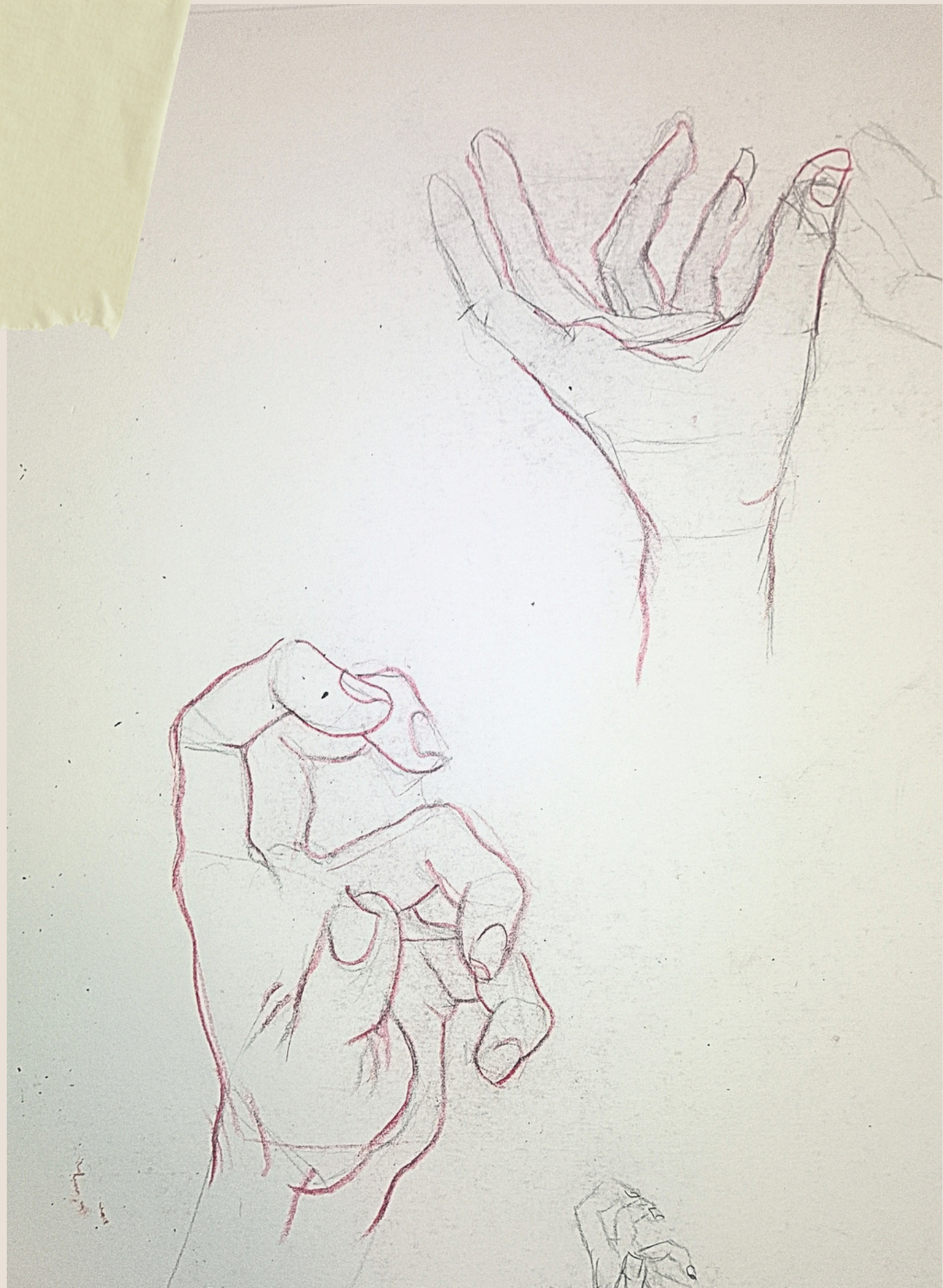


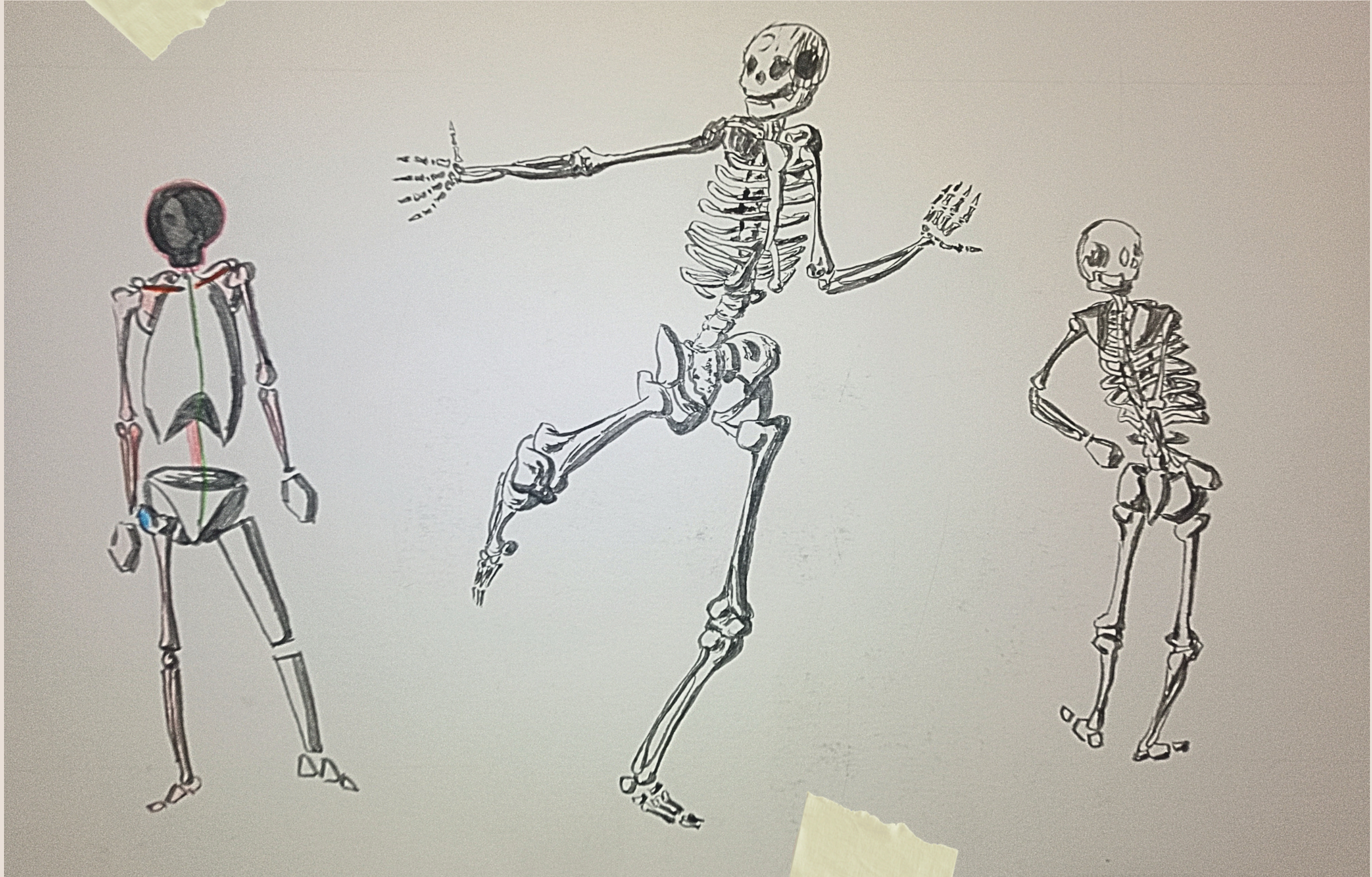




ANATOMIE



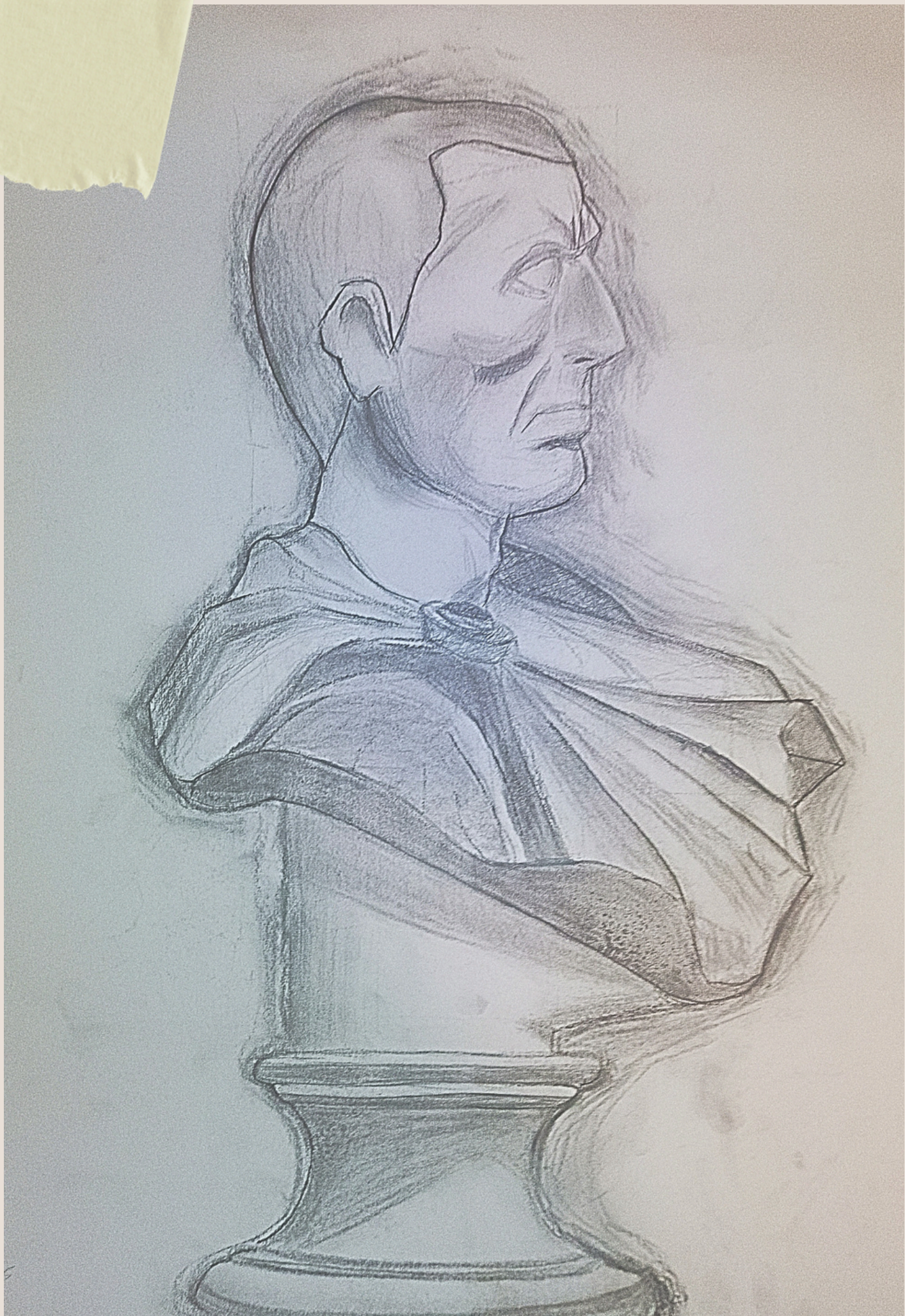


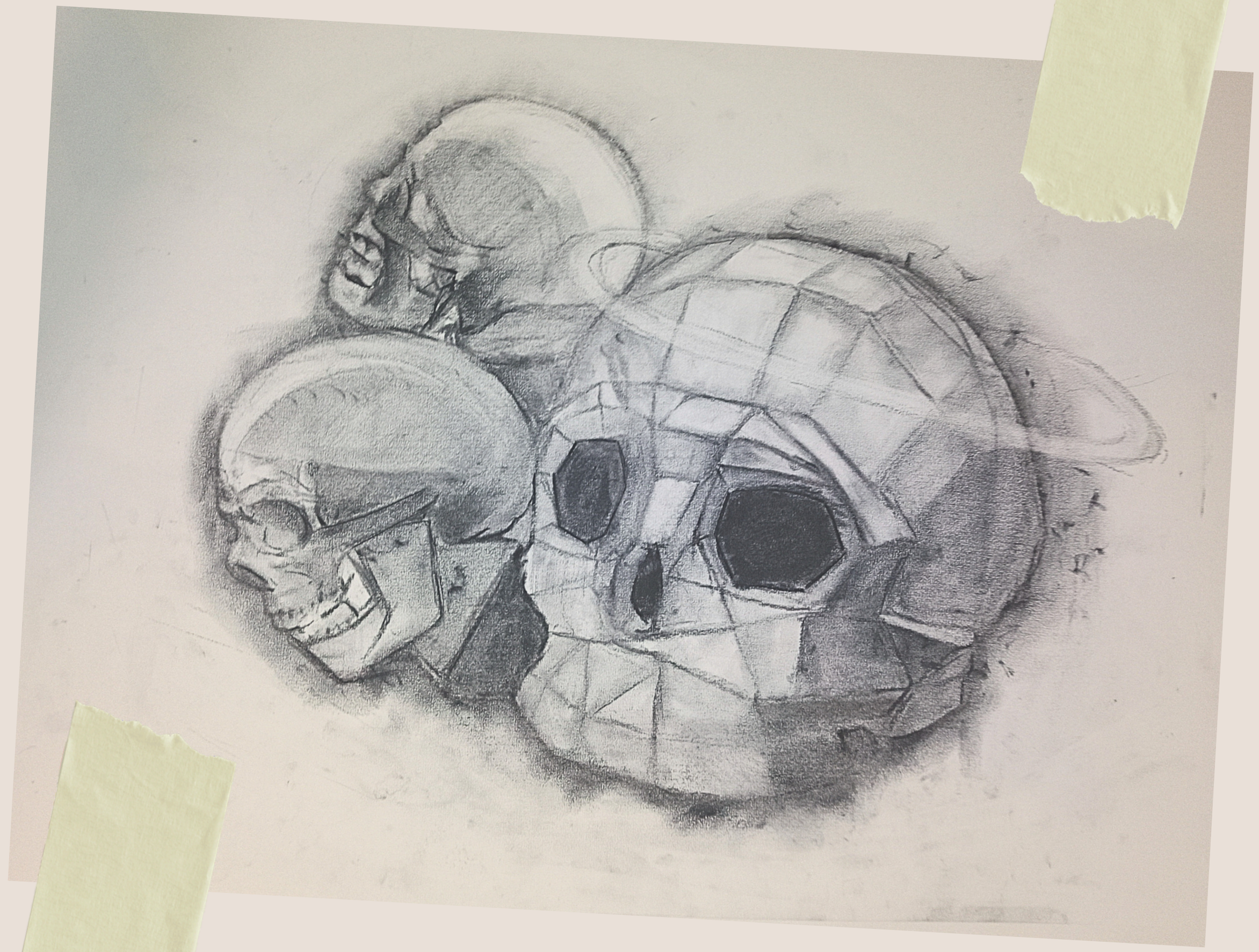




OBSERVATION










**GAME
DESIGN**



Mur Amovible
Fusible

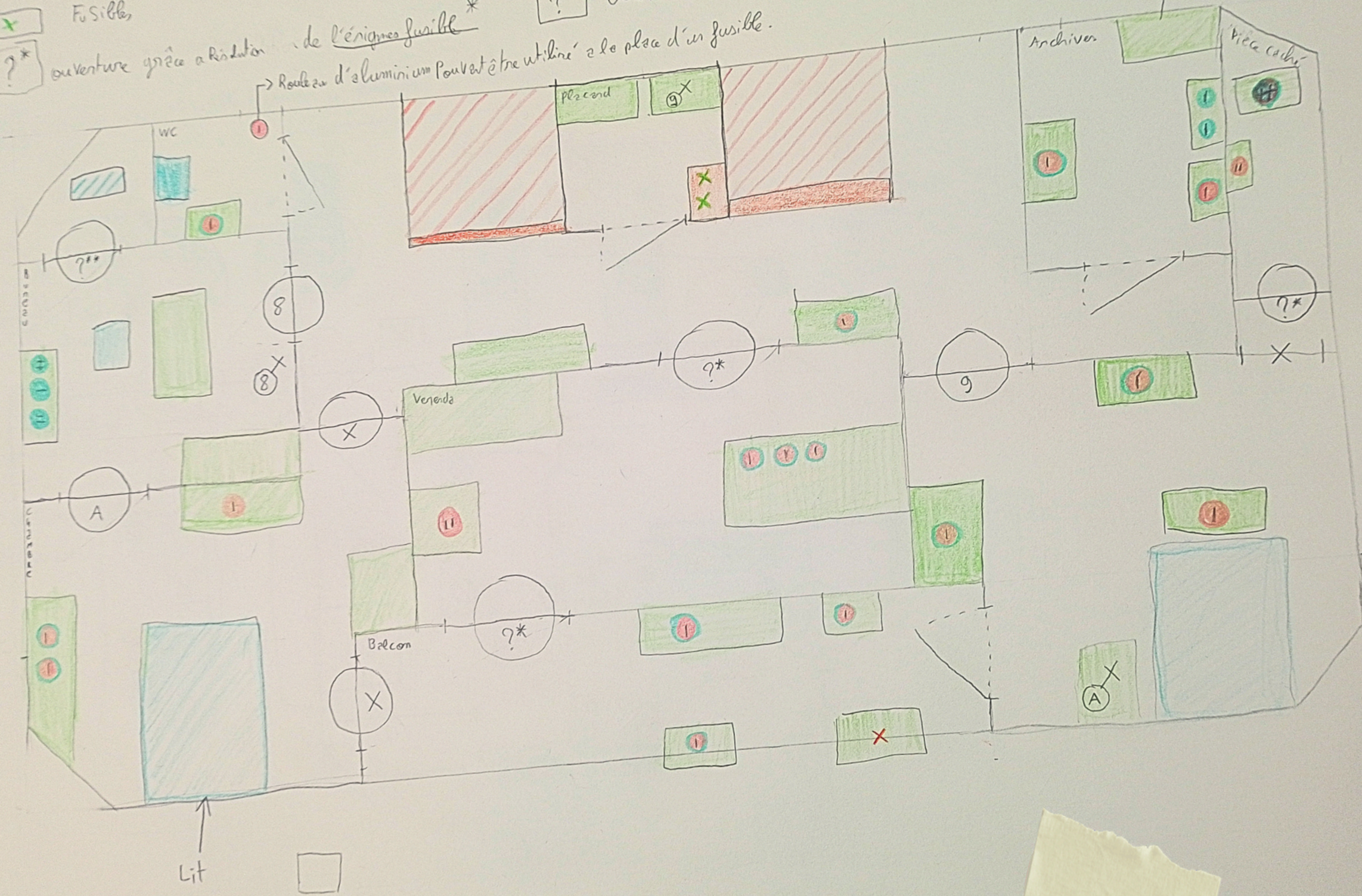
?*

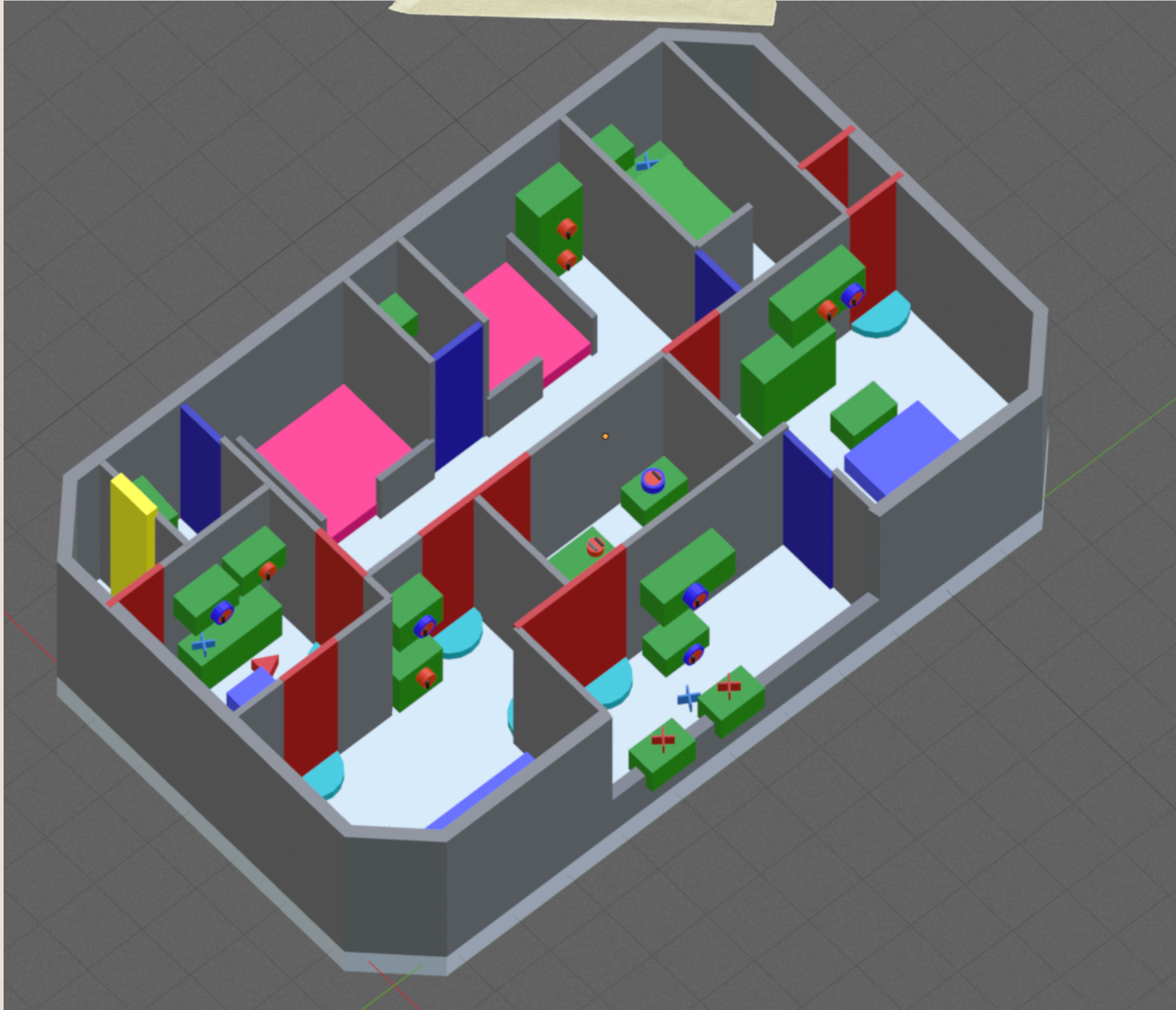
ouverture grâce à résolu-
tion de l'énigme fusible *

?** couverture après énigme en

Rouleau d'aluminium peut être utilisé à la place d'un fusible.

énigme fusible







**PEINNTURE /
ILLUSTRATION**



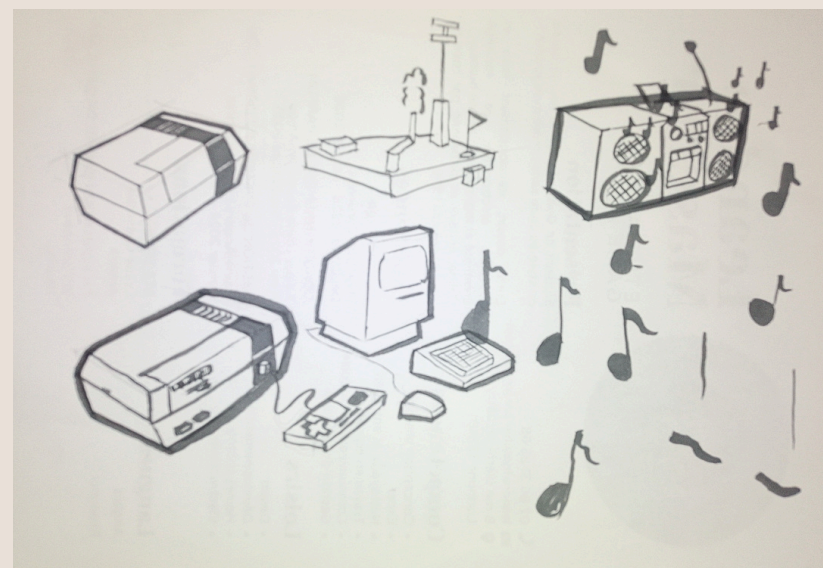
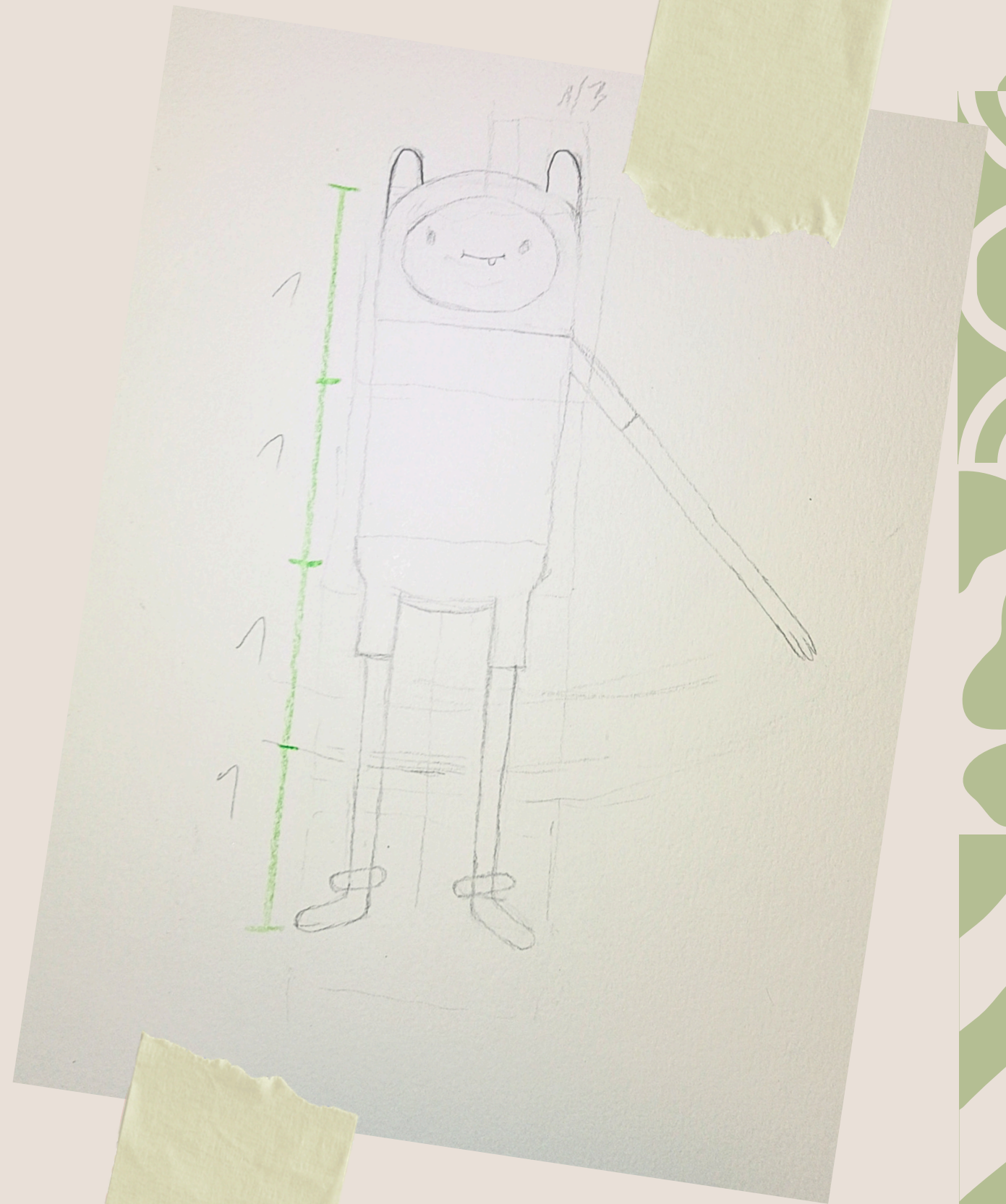
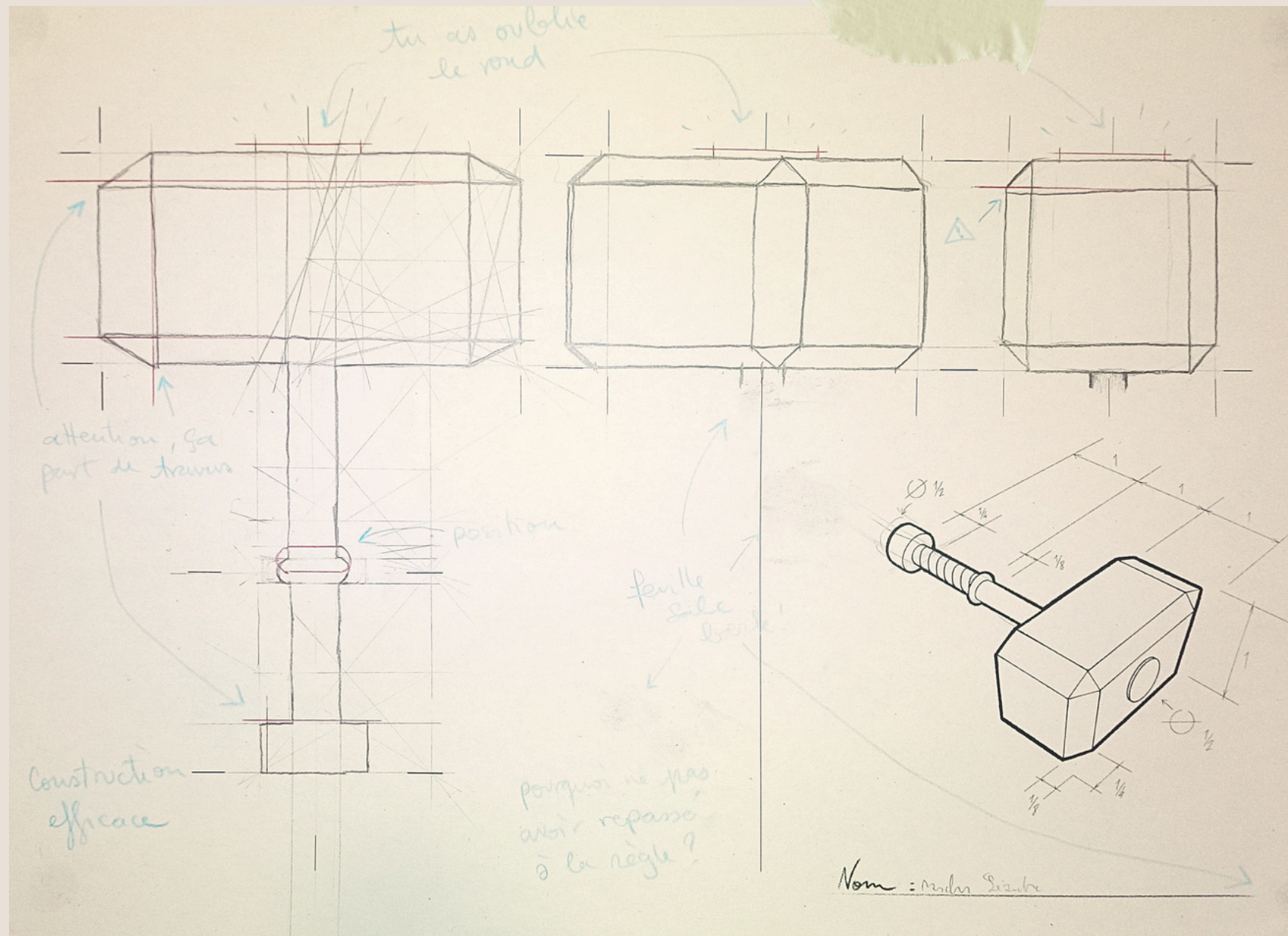






**PRODUCTION
ART**







3D



